



la taab



*the table*



**enn shayzh**

*a chair*

---



**lii zarmwayr**

---

*the cabinets*



li sink

---

*the sink*

The background is a solid dark red color. In the top-left and top-right corners, there are decorative floral patterns composed of small, overlapping circles in a lighter shade of red. The main text is centered and reads "la kornish" in a large, bold, white, sans-serif font.

# la kornish

---

*the shelf*



li fridge

---

*the fridge*



**aen pwel**

---

*a stove*



li plaanshii

---

*the floor*



**la kaan poor  
kaa waypinikayhk**

*the garbage can*

---



li shaasii

---

*the window*



# la port

---

*the door*



libalay

*the broom*

---



lilisavoon

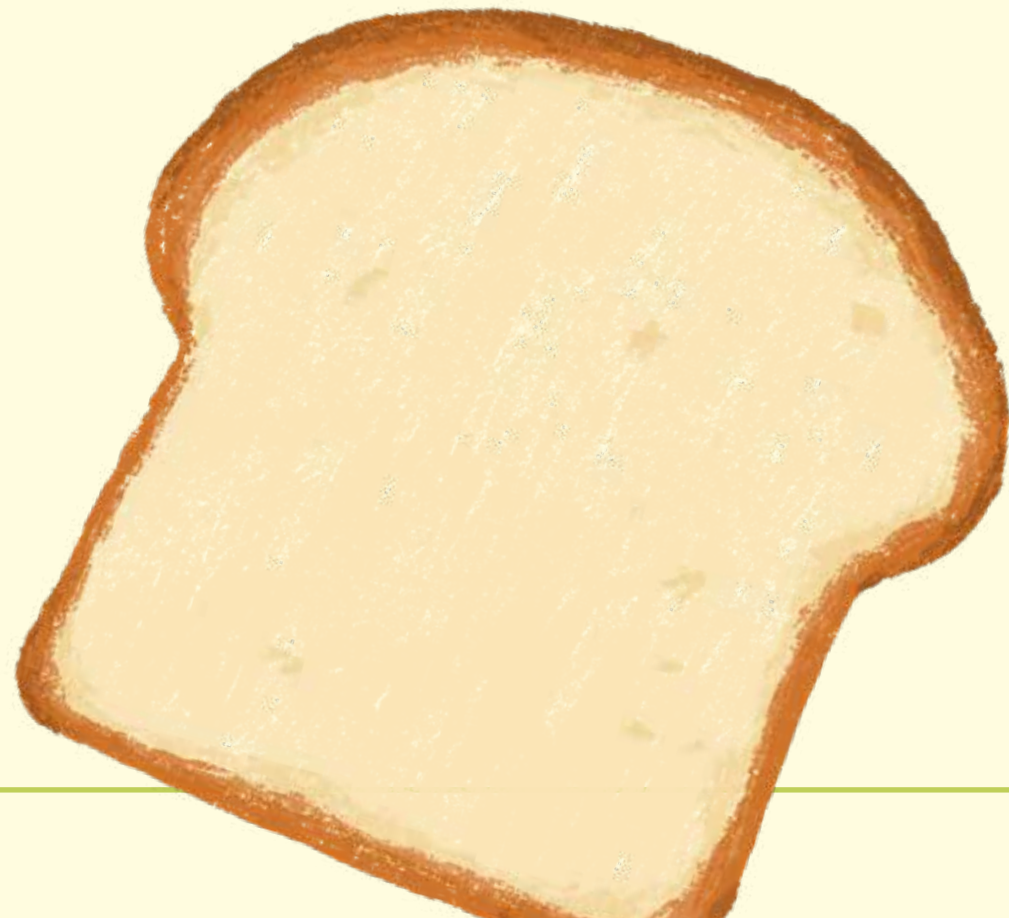
*the soap*

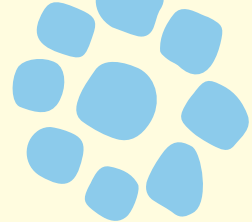
---

lipaen

*bread*

---





# la chwiiizinn

*kitchen*

---



dilet

*milk*



# la soup

*soup*

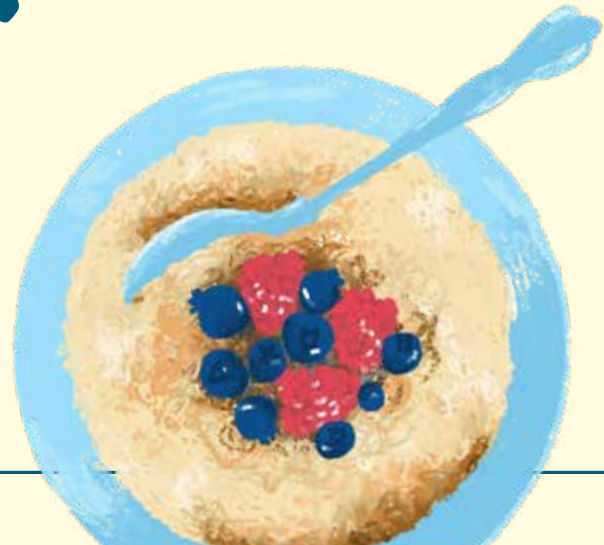
---



# li porridge

*oatmeal*

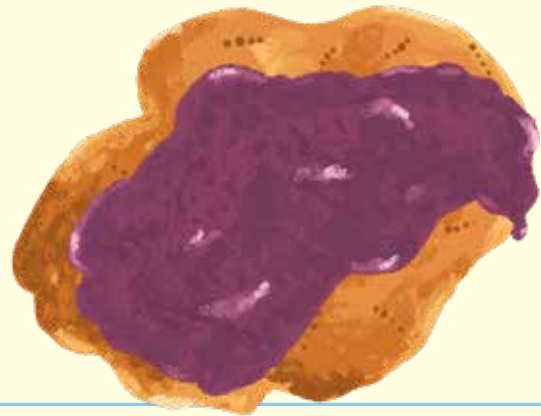
---



# la gaalet

*bannock*

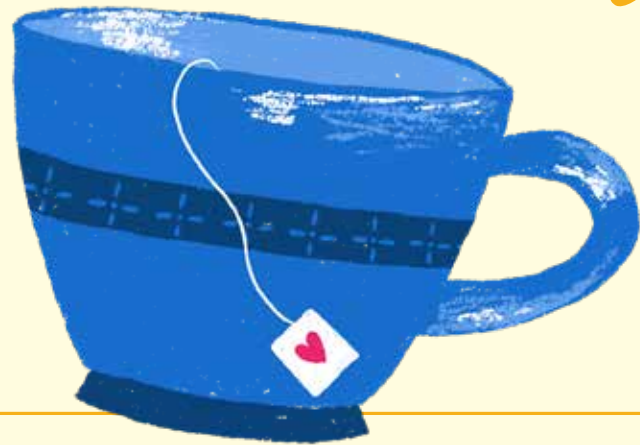
---



enn bol

*a cup*

---



enn

chooyayr

*a spoon*





# enn foorshet

*a fork*

---



**aen**  
**kootoo**

*a knife*

---



enn bol

*a bowl*

---





# aen naasyet



*a plate*

---

